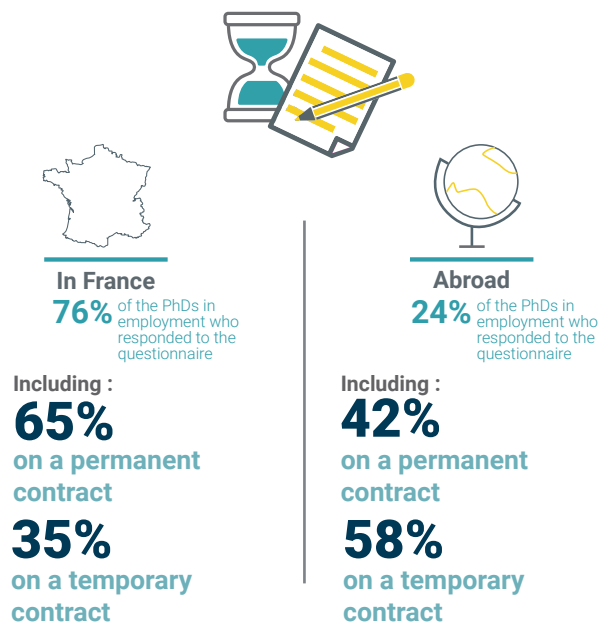
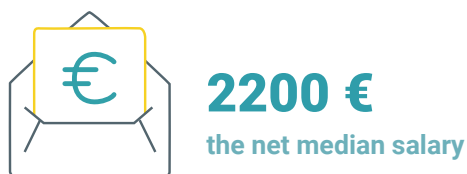


## 9. Contract types



## 10. Salaries



In 2018-2019, UBFC launched the IPDoc\* questionnaire to survey the 2015 and 2017 PhD graduates about their professional status on 1st December 2018. The global participation rate was 54,5%.  
The 2018 UBFC IPDoc survey was carried out by the UBFC doctoral mission thanks to Clément Parmentier, a PhD student in occupational psychology.

\*IPDoc = Insertion Professionnelle des Docteurs = a questionnaire launched by the MESRI, aimed at better knowing PhD graduates' thesis conditions and ensuing careers in France.

Masters and PhD students and graduates all **belong to the Alumni community**. As such, **they have a dedicated digital platform which gathers an address book and many resources for their career.**

For more information : [contact@alumni.ubfc.fr](mailto:contact@alumni.ubfc.fr)

STAY TUNED AND FOLLOW US !



Création et conception : communication UBFC / Octobre 2021 / C0002  
- Please do not litter -



## And after your masters degree... a PhD at UBFC ?

### What is a PhD ?

- It is the highest university degree in France and abroad
- It gives you the title « PhD graduate »
- It is a professional and academic experience which trains people in research

### Why start a PhD ?

- To work on a research project and a field of study that fascinates you
- To contribute to the development of research
- To benefit from the support and guidance of a team
- To acquire internationally recognized research skills and professional experience
- To prepare for a career in academic or extra-academic research

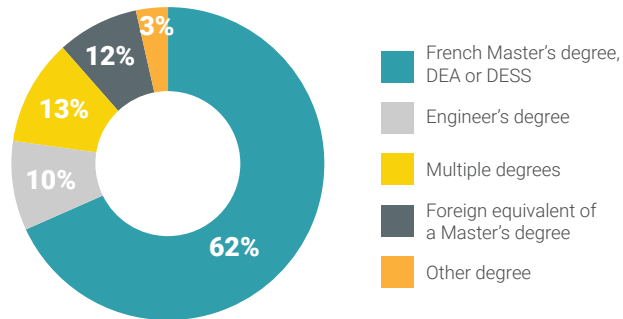
# UBFC PhD 10 key notions

## 1. Distribution

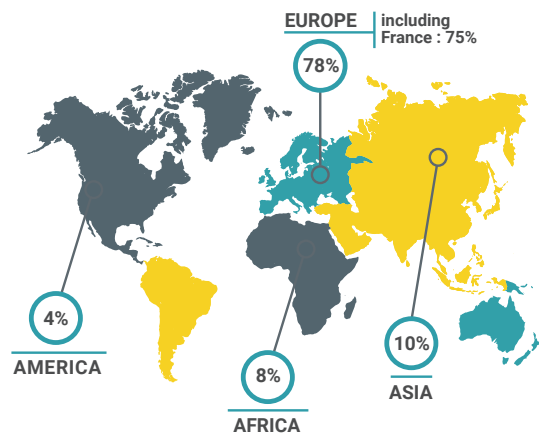
**41%**  
Female

**59%**  
Male

## 2. Degrees



## 3. PhD students' origin



## 4. Funding sources

**68%** received financial support in conjunction with their doctoral research



**Including :**

- 73% from French public funds,
- 15% from foreign funds,
- 10% from private or public-private funds

## 5. Employment

**93%** employment rate\*

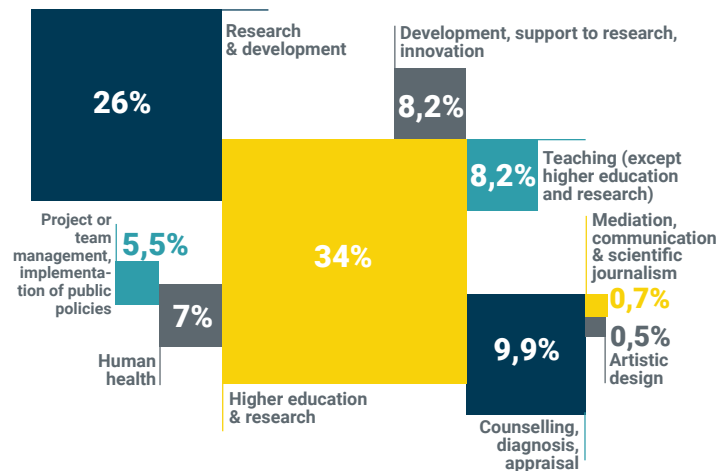


**How ?**

- 28% thanks to their professional network,
- 24% via an informal offer from a firm,
- 22% via a competitive exam,
- 15% by responding to an ad.

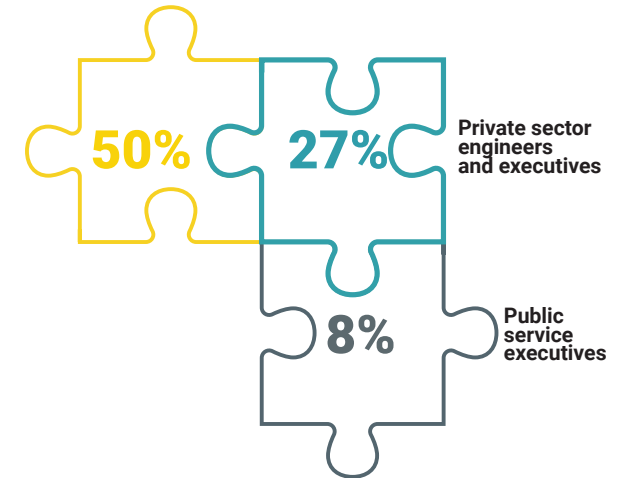
\* Employment rate 1 year and 3 years following graduation, calculated as follows:  
employment rate = [number of people in employment / (number of people in employment + number of people actively looking for a job)]

## 6. Sectors



## 7. Main socio-professional categories

Higher education teachers, senior high and junior high teachers, scientific jobs



## 8. Employers

