

9. Contract types



In France

76% of the PhDs in employment who responded to the questionnaire

Including :
65% on a permanent contract
35% on a temporary contract



Abroad

24% of the PhDs in employment who responded to the questionnaire

Including :
42% on a permanent contract
58% on a temporary contract

10. Salary of the PhDs in employment who responded to the questionnaire



2200 €

net median monthly salary

In 2018-2019, UBFC launched the IPDoc* questionnaire to survey the 2015 and 2017 PhD graduates about their professional status on 1st December 2018. The global participation rate was 54,5%.

The 2018 UBFC IPDoc survey was carried out by the UBFC doctoral mission thanks to Clément Parmentier, a PhD student in occupational psychology.

*IPDoc = Insertion Professionnelle des Docteurs = a questionnaire launched by the MESRI, aimed at better knowing PhD graduates' thesis conditions and ensuing careers in France.

UBFC ALUMNI

Master's and PhD students and graduates all belong to the Alumni community. They therefore have at their disposal a dedicated digital platform which gathers an address book and many resources for their career.

alumni.ubfc.fr



And after your master's degree... a PhD at UBFC ?

What is a PhD ?

- It is the highest university degree in France and abroad.
- It gives you the title « PhD graduate ».
- It is a professional experience which brings high level skills.

Why start a PhD ?

- To work on a research project in an exciting field of study.
- To contribute to the development of research.
- To benefit from the support and advice of a team.
- To acquire skills through research and professional experience, which are internationally recognized.
- To prepare for a career with highly qualified employment in academic and extra-academic fields.

Keep in touch!

doctorat@ubfc.fr

www.ubfc.fr



collegedoctoral.ubfc.fr



Création et conception : communication UBFC / Mai 2022 / 00002 - Do not litter

UBFC PhD in 10 key notions



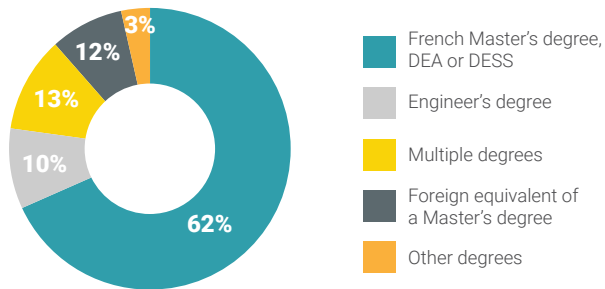
DURING THE PHD

Below, the profiles of the PhDs who ended their thesis in 2015 and 2017

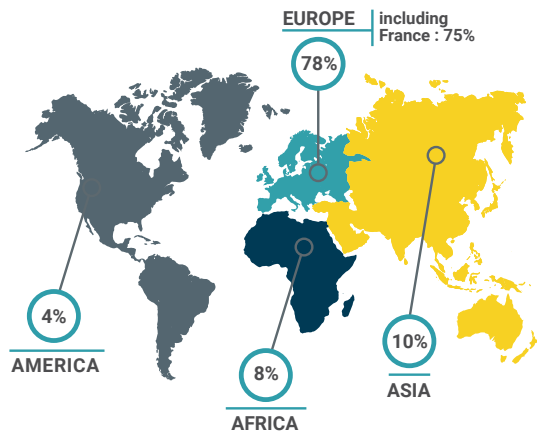
1. Distribution



2. Degree before starting a PhD



3. Geographical origin



4. Funding sources



68% received a financial support linked to their doctoral research

- Including :
- 73% from French public funds,
 - 15% from foreign funds,
 - 10% from private or public-private funds

AFTER THE PHD

Below, the answers of the PhDs who graduated in 2015 and 2017 about their situation on 2018, December 1st.

5. Employment

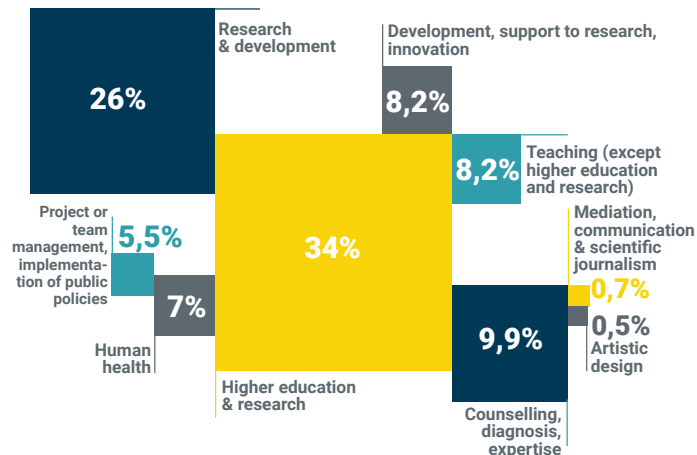
93% employment rate*



- How ?
- 28% thanks to their professional network,
 - 24% via an informal offer from a firm,
 - 22% via a competitive exam,
 - 15% by applying to a job offer.

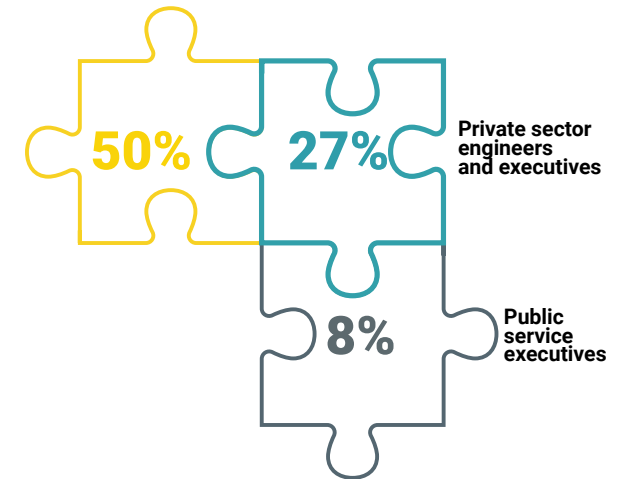
*Average of employment rates 1 year after graduation, and 3 years after graduation.

6. Sectors



7. Socio-professional categories

Teachers in Universities or High Schools, Scientific jobs



8. Employers

